

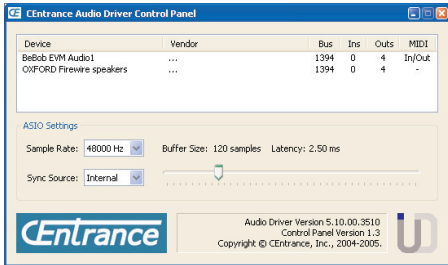


8817 Mango Avenue
Morton Grove, IL 60053

847.581.0500
847.581.0901 fax
info@centrance.com
www.centrance.com

CE1506

Universal Driver



Summary

Unleash the power of your project studio. Add more channels to your existing audio interface. The Universal Driver from CEntrance combines multiple audio interfaces into one, to increase the number of available channels. By linking all of your FireWire audio interfaces, this innovative driver maximizes the value of your gear.

Compatibility

The Universal Driver is compatible with most FireWire audio interfaces, making it an ideal solution for any musician or project studio owner in need of a low-cost alternative to purchasing a brand new audio interface.

Applications

Adding output channels with the Universal Driver will enable you to sum in the analog domain and mix “out of the box.”

Want to add high quality converters on a few select channels? The Universal Driver makes this possible without forcing you to rewire your whole studio or disconnect your current interface.

Are you just a few input channels short of being able to track the whole band live? Using CEntrance’s driver, you can add inputs to your DAW.

Until now, increasing the number of inputs and outputs on your DAW required purchasing a larger and more expensive audio interface. With the Universal Driver from CEntrance, you can expand your project studio’s capabilities without shrinking your wallet. Simply add channels as you need them. This easy-to-install software links all of your audio interfaces to create one combined interface compatible with most DAW applications.

Features

- Sample rates: 44.1, 48, 88.2, and 96kHz
- Bit depths: 16 and 24 bit
- Compatible software: most major DAW applications
- Compatible hardware: most FireWire interfaces using Oxford Semiconductor, Wavefront Semiconductor, and BridgeCo chips
- Buffer latency: 2ms*
- Maximum available channels: 32 in x 32 out (FireWire 400), 64 in x 64 out (FireWire 800)
- Recommended configuration: Pentium 1 GHz, Windows XP, 512 MB RAM, 50 MB available disk space

*Actual round trip latency depends on system speed and buffer settings.

